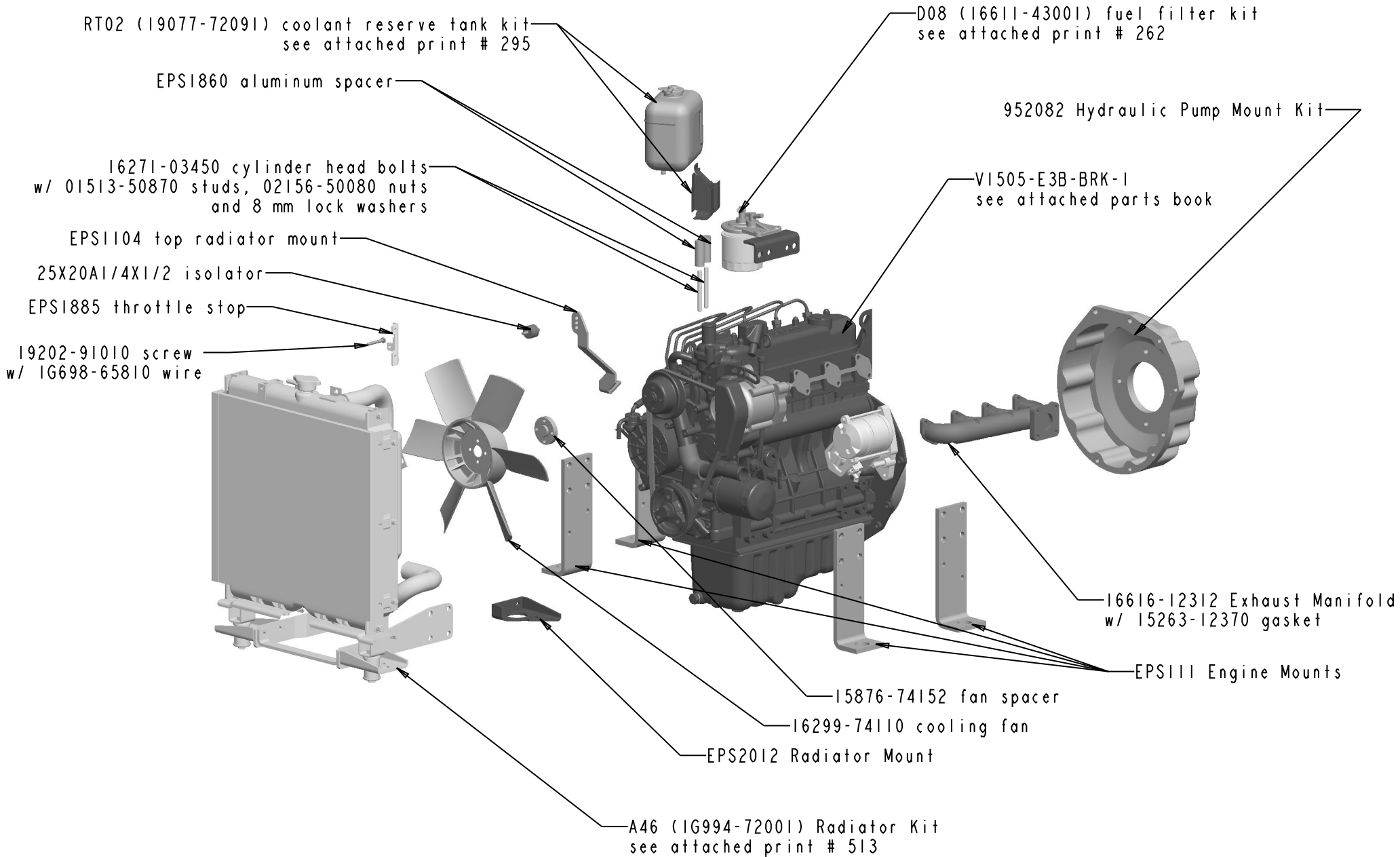


V1505B-1AAR2-IL

SCALE: 0.100

TSS82/TSS90 ILLUSTRATED PARTS LIST
10/7/10 REV



262. KUBOTA DIESEL ENGINE OPTION K OUTLINE

1. Kit No. 16611-43001

2. Kit Name Fuel Filter Kit 2 (D08)

3. Applicable Engine Model

	KTC Model	
D905-KTC, D905-SAE, D905-BG	D905B-1, D905B-2, D905BG-2	D905-BB, D905-BBS
D1005-KTC, D1005-SAE, D1005-BG	D1005B-1, D1005B-2, D1005BG-2	D1005-BB, D1005-BBS
D1105-KTC, D1105-SAE, D1105-BG	D1105B-1, D1105B-2, D1105BG-2	D1105-BB, D1105-BBS
V1205-KTC, V1205-SAE, V1205-BG	V1205B-1, V1205B-2, V1205BG-2	V1205-BB, V1205-BBS
V1305-KTC, V1305-SAE, V1305-BG	V1305B-1, V1305B-2, V1305BG-2	V1205-BB, V1205-BBS
V1205T-KTC, V1205T-SAE	V1205TB-1, V1205TB-2	V1205T-BB, V1205T-BBS
V1505-KTC, V1505-SAE, V1505-BG	V1505B-1, V1505B-2, V1505BG-2	V1505-BB, V1505-BBS
V1505T-KTC, V1505T-SAE	V1505TB-1, V1505TB-2	V1505T-BB, V1505T-BBS

4. Component Parts

PARTS No.	PARTS NAME	Q'TY/KIT
15224-43013	Assy, Fuel Filter	1
(15221-43172	Filter Cartridge)	1
16286-43431	Holder, Fuel Filter	1
01123-50822	Bolt	2

5. Note

★ Filtration Area : 840 cm² (130.20 in²)

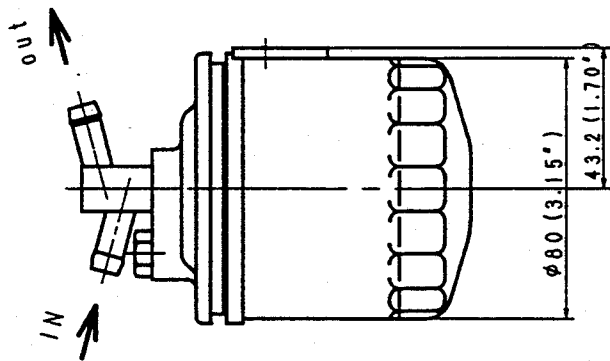
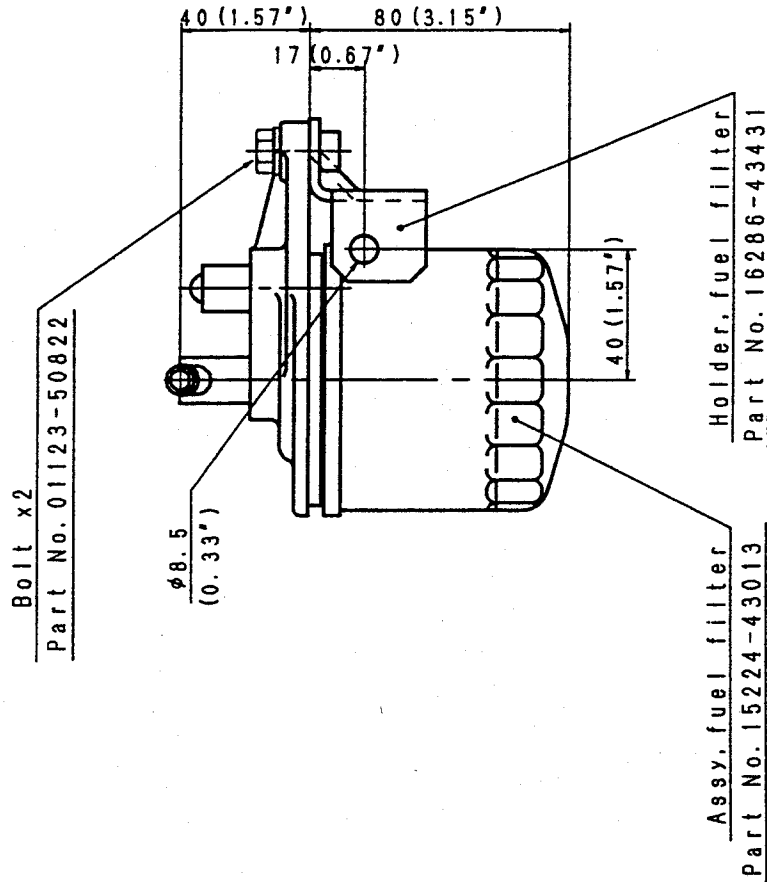
Date	May.26,'92	Jan.17,'94	Feb.15,'99	
------	------------	------------	------------	--

KUBOTA Corporation

262.KUBOTA DIESEL ENGINE OPTION KIT
ASSEMBLING DRAWING

KIT NO. :16611-43001

KIT NAME:Fuel Filter Kit 2



16611-43001

Kubota

FEB. 08. 99'

295. KUBOTA DIESEL ENGINE OPTION KIT OUTLINE

1. Kit No. 19077-72091

2. Kit Name Over Flow Tank Kit 1

3. Applicable Engine Model

	KTC Model	
D1403-KTC, D1403-SAE	D1403B-1, D1403B-2	D1403-BB, D1403-BBS
D1703-KTC, D1703-SAE	D1703B-1, D1703B-2	D1703-BB, D1703-BBS
V1903-KTC, V1903-SAE	V1903B-1, V1903B-2	V1903-BB, V1903-BBS
V2203-KTC, V2203-SAE	V2203B-1, V2203B-2	V2203-BB, V2203-BBS
F2803-KTC, F2803-SAE	F2803B-1, F2803B-2	F2803-BB, F2803-BBS

4. Component Parts

PARTS No.	PARTS NAME	Q'TY/KIT
15501-72404	Assy, Reserve Tank	1
15521-72462	Stay, Reserve Tank	1

5. Note

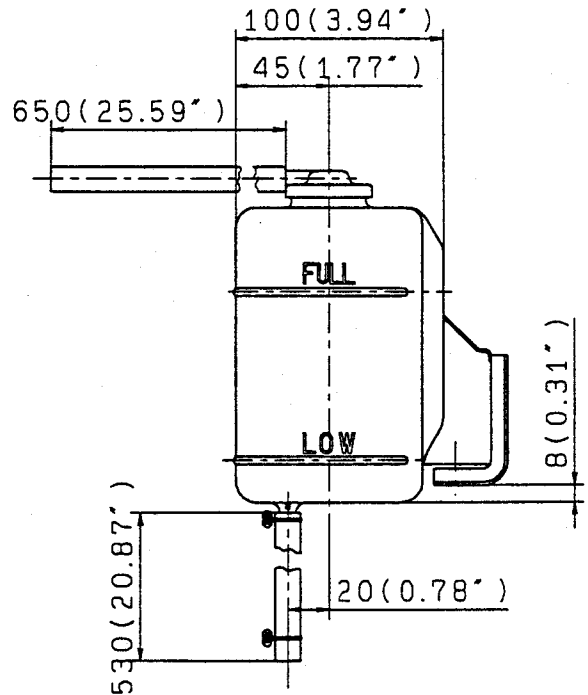
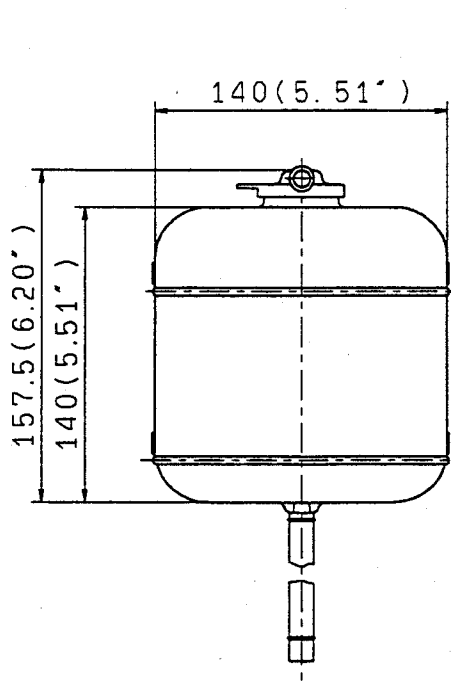
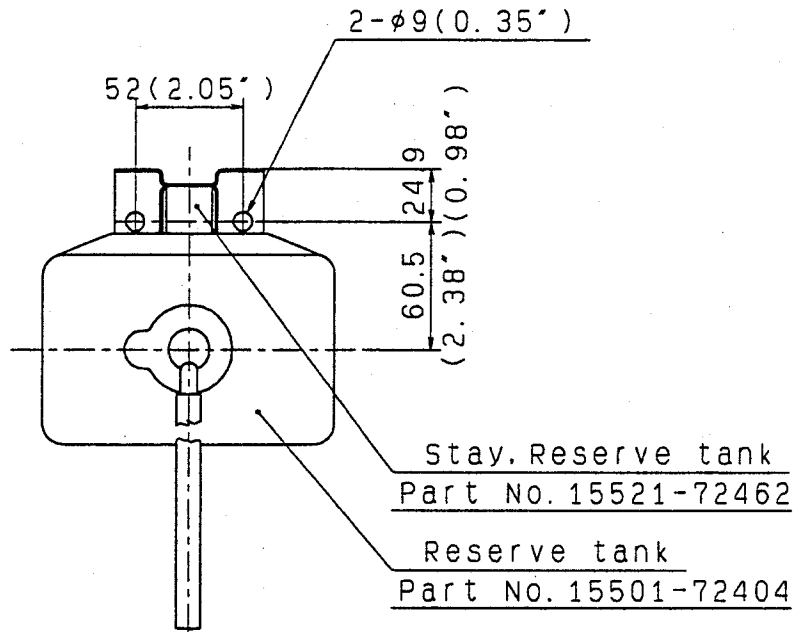
- ★ Tank capacity : 1.6 lit (0.42 US gal)
- Full : 1.1 lit (0.29 US gal)
- Low level : 0.15 lit (0.04 US gal)

6. Date Oct. 31, '91 Mar. 26, '99

295. KUBOTA DIESEL ENGINE OPTION KIT ASSEMBLING DRAWING

KIT NO. :19077-72091

KIT NAME:Over Flow Tank Kit 1



19077-72091

DEC. 17. 98'

Kubota

513. KUBOTA DIESEL ENGINE OPTION KIT OUTLINE

1. Kit No. 1G994-72001

2. Kit Name V1505 ALRad Kit 3 (A46)

3. Applicable Engine Model

V1505-B

4. Component Parts

PARTS No.	PARTS NAME	Q'TY/KIT	PART No	PART NAME	Q'TY/Kit
1G994-72062	Assy, Radiator	1	19416-72251	Net, Radiator	1
19426-87881	Label, Radiator	1	04015-50060	Washer, plain	6
1G996-72851	Pipe, water	1	01023-50612	Bolt	6
1K522-72941	Pipe, Water	1	1G698-74121	Cover, Fan	1
09318-89039	Band	4	01053-50614	Bolt	4
15111-72181	Cushion	2	02056-50060	Nut	4
15111-72191	Cushion	2	04512-50060	Washer, spring	4
15108-72383	Bolt	2	04014-50060	Washer, plain	8
15111-72202	Washer	4	1G996-72131	Support IN, Rad.	1
05515-51000	Snap pin	2	1G996-72141	Support Ex, Rad.	1
16616-72132	Support 1, Radiator	1	01025-50614	Bolt	2
16616-72142	Support 2, Radiator	1	1G996-72171	Stay 2 Radiator	1
16616-72162	Stay 1, Radiator	2	01023-50630	Bolt	2
16616-72151	Stay 3, Radiator	1	1G930-72191	Cushion	1
01123-50822	Bolt	2	02014-50060	Nut	2
01123-50830	Bolt	2	04512-50060	Washer, spring	2

5. Note

Radiator Specifications

★ Heat Rejection : 28.1 kW (24,167 kcal/H)

★ Radiation Area : 4.95 m² (53.28 ft²)

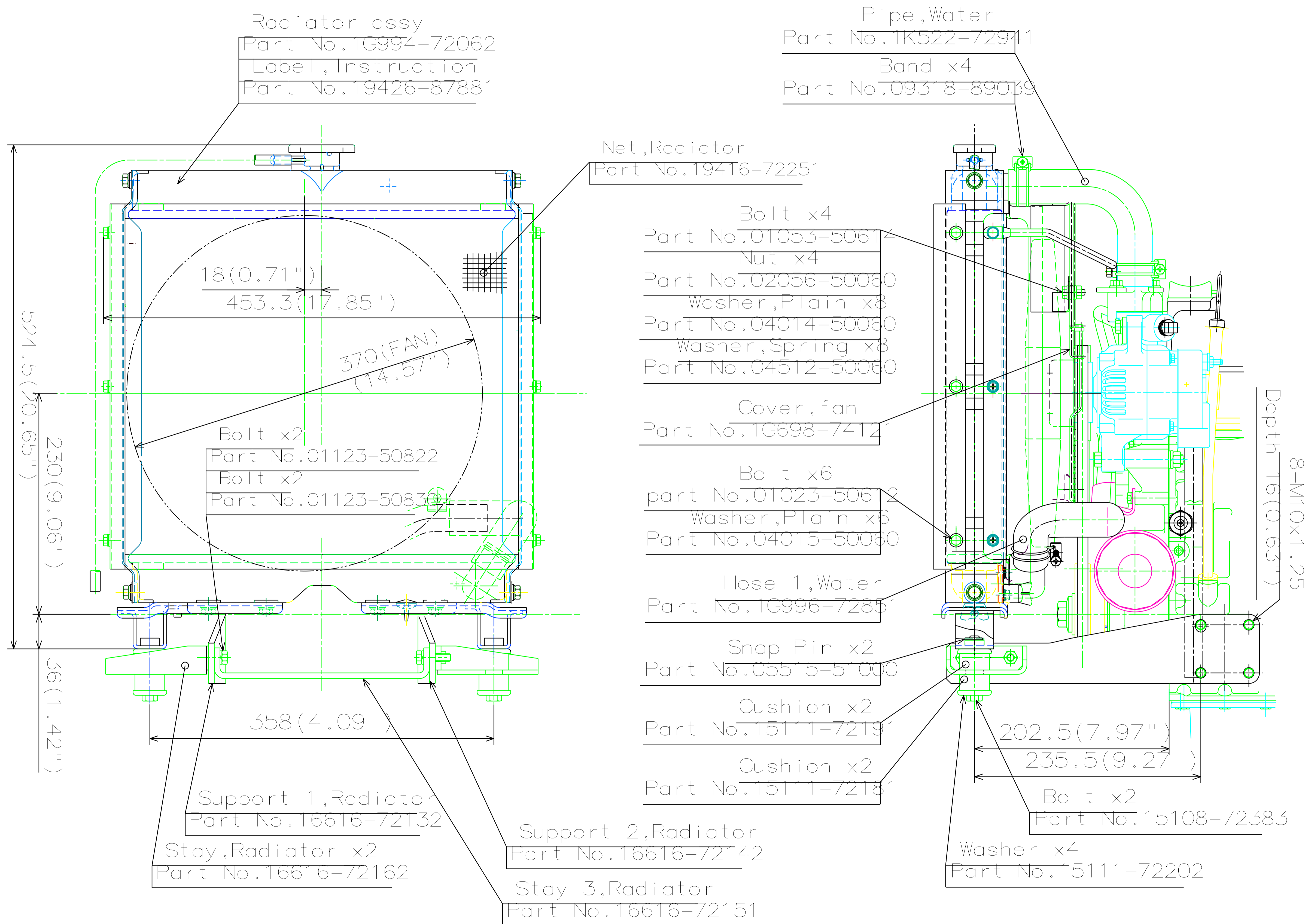
★ Amount of Water : Approx. 1.7 lit (0.45 US gal)

★ Dray Mass : Approx. 5.3 kg (11.68 lbs)

★ This kit is Aluminium radiator to replace previous copper radiator (Kit No.16626-72001).

Date	JUN. 21, '05	DEC. 26, '06	
------	--------------	--------------	--

KUBOTA Corporation



513 . KUBOTA DIESEL ENGINE OPTION KIT

ASSEMBLING DRAWING

Kit No. : 1G994-72001 (1/2)

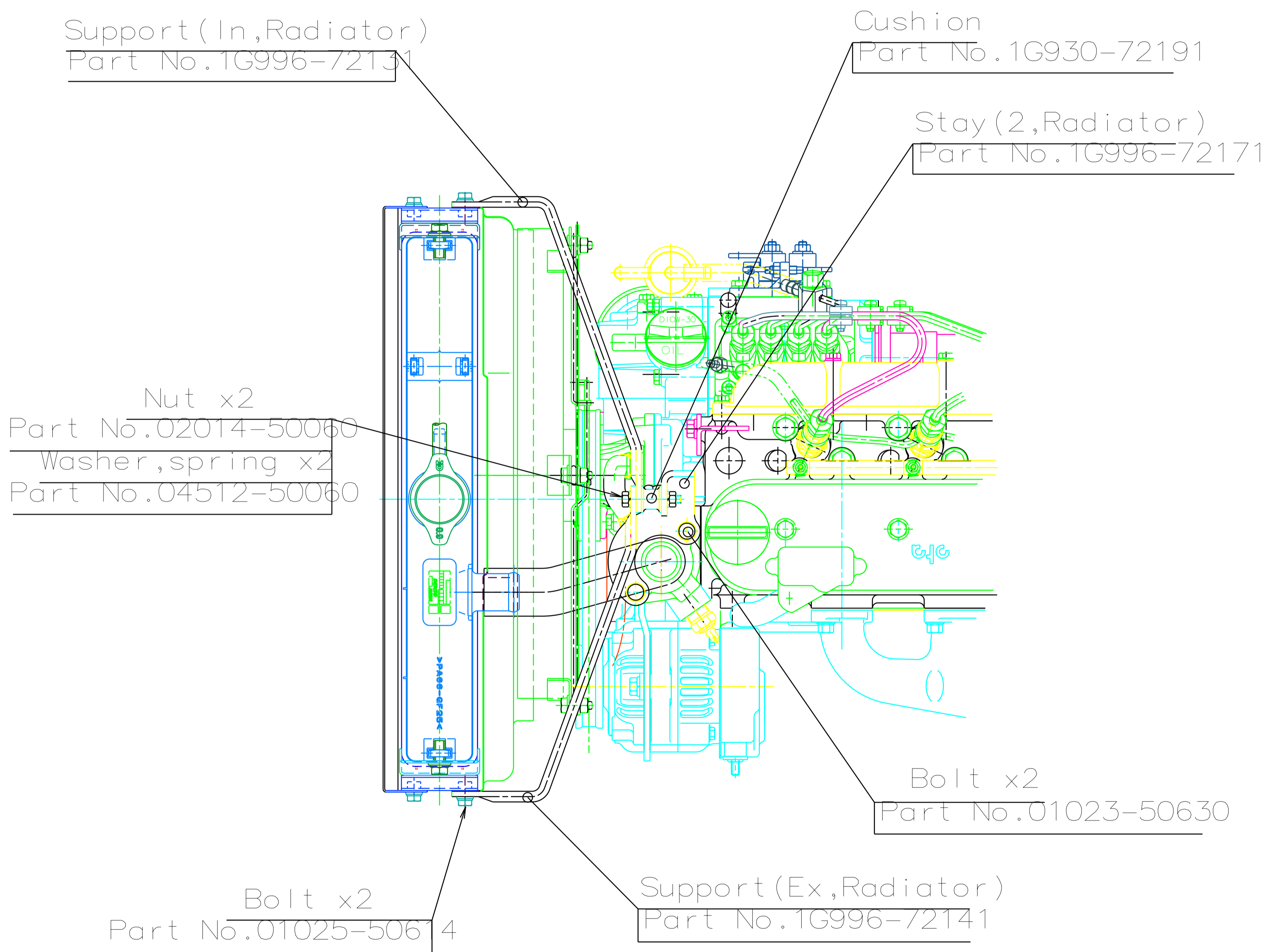
Kit Name : V1505 ALRad Kit 3

513 . KUBOTA DIESEL ENGINE OPTION KIT

ASSEMBLING DRAWING

Kit No. : 1G994-72001 (2/2)

Kit Name : V1505 ALRad Kit 3

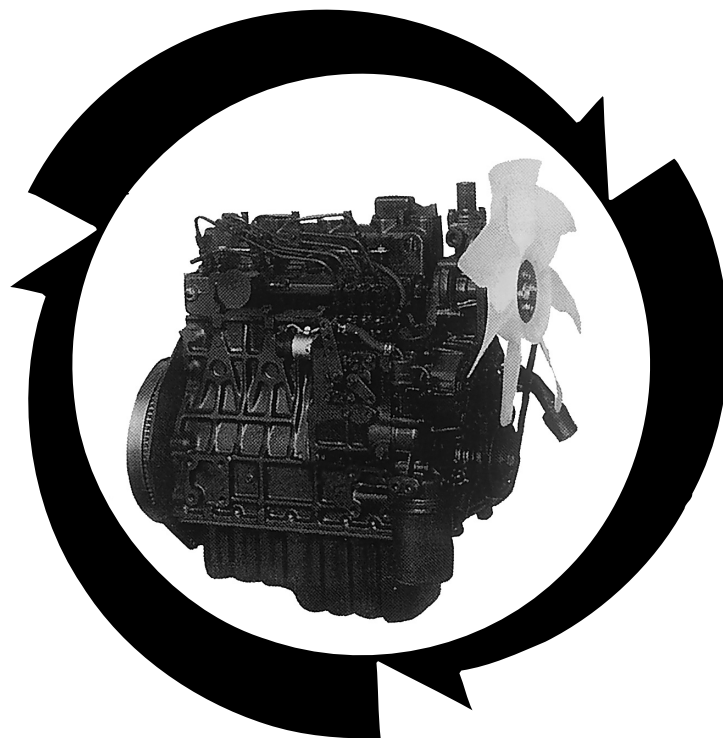


**ILLUSTRATED PARTS LIST
LISTA DE PIEZAS
LISTE DES PIECES**

KUBOTA

**MODEL V1505-E3B-BRK-1
MODELO
MODELE**

**DIESEL ENGINE
MOTOR DIESEL
MOTEUR DIESEL**



Kubota

97898-73550

JAN.
ENERO 2008
JANVIER

NOTICE

This Parts List is for the following purposes.

1. When ordering parts, check with this Parts List to confirm the part number and the name of parts.
2. When making repairs, refer to the illustrations in this Parts List.
3. This Parts List is subject to change without notice.

NOTA

Esta lista de piezas tiene el objetivo siguiente.

1. Cuando solicite piezas, consulte esta Lista de piezas para confirmar su número de referencia y nombre.
2. Al efectuar reparaciones, consulte las ilustraciones de esta Lista de piezas.
3. Esta lista de piezas está sujeta a cambios sin previo aviso.

NOTE

Utilisation de ce livre

1. A la commande d'une pièce, chercher la référence et le nom de la pièce.
2. Pour les réparations, employez les illustrations.
3. La liste des pièces peut-être modifié sans préavis.

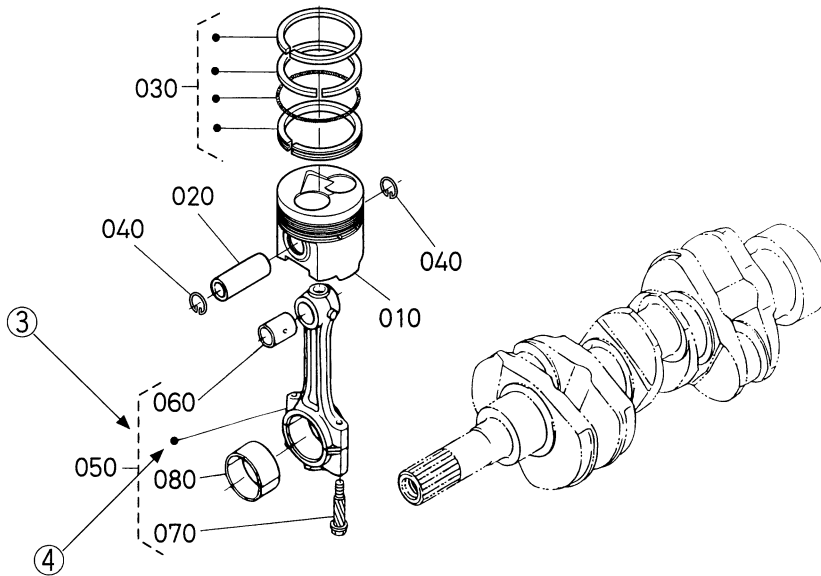
MODEL MODELO MODELE	CODE No. CÓDIGO No. No. DE CODE
V1505-E3B-BRK-1	1J994-27000

INSTRUCTIONS INSTRUCCIONES INSTRUCTION

①
↓
0102 PISTON AND CRANKSHAFT
PISTON Y CIGUENAL
PISTON ET VILEBREQUIN

②
↓
[B]

⑩ → S.No. ; A: ≤15000, B: 14000 to 15000



⑤ ↓

REF. No. No. DE REF. POS.No.	PART No. No. REF REFERENCE	PART NAME	DESCRIPCION	DESIGNATION	QTY./S.No. CANTIDAD/No. DE SERIE		I.C. I/C	REMARKS NOTA REMARQUES
					A	B		
010	15800-0000-0	PISTON	PISTON	PISTON	1 <=15000	1 <=15000		{Example-1}
010	15800-0000-2	PISTON	PISTON	PISTON	1 >=15001	1 >=15001		{Ejemplo-1}
020	15800-1000-0	PIN,PISTON	PASADOR, PISTON	AXE DE PISTON	1 <=15000	1 <=15000		{Example-1}
020	15800-1000-2	PIN,PISTON	PASADOR, PISTON	AXE DE PISTON	1 >=15001	1 >=15001	≠	{Example-2}
030	15800-2000-0	ASSY PISTON RING	CONJUNTO PISTON ARO	ENS.JEU DE SEGMENTS	1 <=15000	1 <=15000		{Ejemplo-2}
030	15830-2000-0	ASSY PISTON RING	CONJUNTO PISTON ARO	ENS.JEU DE SEGMENTS	1 >=15001	1 >=15001		{Exemple-2}
								{Example-3}
								{Ejemplo-3}
								{Exemple-3}

⑥ ↓ A:XXXXX, B:XXXXX

⑦ ↓

⑧ ↓

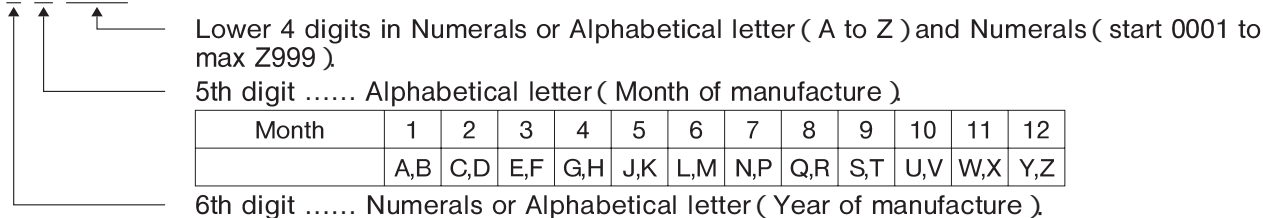
⑨ ↓

- ① Fig. No. Represents No. corresponding to each group name.
- ② Specifications The types and destinations of sister models are indicated. These indications are given to tell their relevant pages in this book.
(for sister models)
- ③ Components The components of an assembly are identified by a bracket of dotted lines.
- ④ Point Indicates that the parts is not sold independently.
The assembly (Ref.No.050) containing the part needs to be ordered.
- ⑤ REF. No. Reference numbers are assigned to parts in the illustration.The code number of a part in the illustration can be identified by referring to the same reference number in the parts list.
- ⑥ Model name The name of the basic model is indicated in this column. Other applicable models are indicated on the “REMARKS” column ⑨.
- ⑦ S. No. Indicates a group of serial numbers to which a design change is applied.
(serial No.)

Engine Serial No.

7 J 0001

7 K A001



Lower 4 digits in Numerals or Alphabetical letter (A to Z) and Numerals (start 0001 to max Z999)

5th digit Alphabetical letter (Month of manufacture)

Month	1	2	3	4	5	6	7	8	9	10	11	12
	A,B	C,D	E,F	G,H	J,K	L,M	N,P	Q,R	S,T	U,V	W,X	Y,Z

6th digit Numerals or Alphabetical letter (Year of manufacture)

Year	1998	1999	2000	01	02	03	04	05	06	07	08	09	10	11
	W	X	Y	1	2	3	4	5	6	7	8	9	A	B

- ⑧ I. C. Indicates the interchangeability of parts due to design change.
(interchangeability)

Example-1 ← indicates that a new part can replace an old part, but not vice versa.
15800-0000-0 is applicable to the first serial number to S. No. 15000.
15800-0000-2 is applicable to the first serial number and above.
- Example-2 ≠ indicates that the new and old parts are not interchangeable.
15800-1000-0 is applicable to the first serial number to S. No. 15000.
15800-1000-2 is applicable to S. No. 15001 and above.
- Example-3 ↔ indicates that the new and old parts are interchangeable. Both 15800-2000-0 and 15830-2000-0 are applicable to the first serial number and above.
- ⑨ REMARKS 1 In this column, enter other applicable model names, dimensions and other special items.
- ⑩ REMARKS 2 The following expressions are used in NOTE for each group.
Machines' serial numbers are indicated as follows.
<=15000 Serial number below 15000.
>=15001 Serial number above 15001.
14000 to 15000 Serial number 14000 to 15000.
For some models, the above expressions may also be used REMARKS 1 ⑨.

- ① Fig. No. Representa el No. que corresponde al nombre de cada grupo.
- ② Especificaciones ... Se indican los tipos y destinos de los modelos del mismo tipo. Éstas se dan para indicar (para los modelos gemelos) las páginas correspondientes a los modelos en este libro.
- ③ Componentes Los componentes de un conjunto se identifican mediante un paréntesis o líneas de puntos.
- ④ Punto Indica que las piezas no se venden por separado.
Es necesario solicitar el conjunto (No. DE REF. 050) que contiene la pieza.
- ⑤ No. DE REF. En la ilustración se asignan números de referencia a las piezas. Puede identificar el número de código de una pieza de la ilustración consultando el número de referencia en la lista de piezas.
- ⑥ Nombre del modelo ... En esta columna se indica el nombre del modelo básico. Otros modelos se indican en la columna ⑨ “NOTA”.
- ⑦ No. DE SERIE Indica un grupo de números de serie al que se aplica un cambio de diseño.

No. DE SERIE del motor

7 J 0001

7 K A001

4 dígitos menores de los números o de letra del alfabeto (A hasta Z) y los números (de 0001 hasta max. Z999).
Quinto dígito letra del alfabeto (mes de fabricación).

Mes	1	2	3	4	5	6	7	8	9	10	11	12
	A,B	C,D	E,F	G,H	J,K	L,M	N,P	Q,R	S,T	U,V	W,X	Y,Z

Sexto dígito Letra del alfabeto o número (año de fabricación).

Año	1998	1999	2000	01	02	03	04	05	06	07	08	09	10	11
	W	X	Y	1	2	3	4	5	6	7	8	9	A	B

- ⑧ I/C Indica la intercambiabilidad de piezas debida a un cambio en el diseño. (intercambiabilidad)
Ejemplo-1 ← Indica que una pieza nueva puede sustituir a la anterior, pero no a la inversa.
15800-0000-0 es aplicable desde el primer número de serie hasta el No. S. 15000.
15800-0000-2 es aplicable al primer número de serie y a los siguientes.
Ejemplo-2 ≠ indica que las piezas nuevas y viejas no son intercambiables.
15800-1000-0 es aplicable al primer número de serie hasta el No. S.15000.
15800-1000-2 es aplicable al número de serie 15001 y a los siguientes.
Ejemplo-3 ↔ indica que las piezas nuevas y viejas son intercambiables. Tanto 15800-2000-0 y 15830-2000-0 son aplicables al primer número de serie y a los siguientes.
- ⑨ NOTA 1 Escriba en esta columna otros nombres de modelos, dimensiones y otros elementos especiales pertinentes.
- ⑩ NOTA 2 Las siguientes expresiones se utilizan en las Notas para cada grupo. Los números de serie de las máquinas se indican del siguiente modo:
<=15000 Números de serie inferiores a 15000.
>=15001 Números de serie superiores a 15001.
De 14000 a 15000 Número de serie entre 14000 y 15000.
En algunos modelos, las expresiones anteriores también pueden utilizarse NOTA 1⑨.

- ① No. de Fig. Représente le No. de chaque nom de groupe.
- ② Spécifications Les types et les destinations des modèles soeurs sont indiqués. Ces indications (pour modèles soeurs) sont données pour donner leurs pages relatives dans ce livre.
- ③ Composantes Les composantes d'un ensemble sont identifiées par des parenthèses en pointillé.
- ④ Point Indique que la pièce n'est pas à vendre toute seule.
Elle doit être commandée avec l'ensemble (POS.No. 050) qui la contient.
- ⑤ POS.No. Des numéros de position sont donnés aux pièces représentées dans l'illustration.
Le référence d'une pièce de l'illustration peut être identifié en se reportant au même numéro de position indiqué dans la liste des pièces détachées.
- ⑥ Nom de type Le nom du type de base est indiqué dans cette colonne. Les autres modèles sont indiqués dans la colonne des "REMARQUES" ⑨.
- ⑦ No. S. Indique un groupe de numéros de série qui a subit des modifications de modèle.
(No. de série)

No. de série de moteur

7 J 0001

7 K A001

4 chiffres inférieurs en lettres numéraux ou alphabétiques de A à Z et numéraux de 0001 jusqu'à Z999 au maximum .

5^{ème} chiffre Lettre alphabétique Mois de fabrication .

Mois	1	2	3	4	5	6	7	8	9	10	11	12
	A,B	C,D	E,F	G,H	J,K	L,M	N,P	Q,R	S,T	U,V	W,X	Y,Z

6^{ème} chiffre Numéral ou lettre alphabétique Année de fabrication .

Année	1998	1999	2000	01	02	03	04	05	06	07	08	09	10	11
	W	X	Y	1	2	3	4	5	6	7	8	9	A	B

- ⑧ I. C. Indique la permutabilité des pièces due à un changement dans le modèle.
(permutabilité)
Exemple-1 ← indique que la nouvelle pièce peut remplacer la vieille, mais pas vice versa.
Le 15800-0000-0 s'applique au premier numéro de série jusqu'au No.S. 15000.
Le 15800-0000-2 s'applique au premier numéro de série et à ceux ci-dessus.
Exemple-2 ≠ indique que la nouvelle et vieille pièces sont permutables.
Le 15800-1000-0 s'applique au premier numéro de série jusqu'au No.S. 15000.
Le 15800-1000-2 s'applique au No.S. 15001 et à ceuxci-dessus.
Exemple-3 ↔ indique que la nouvelle pièce et la vieille pièce sont interchangeable. Toules deux numéros 15800-2000-0 et 15830-2000-0 sont applicables a premier numéro de cette depuis.
- ⑨ REMARQUES 1 ... Cette colonne renferme d'autres noms de modèles applicables, les dimensions et autres éléments spéciaux.
- ⑩ REMARQUES 2 ... Les expressions suivantes sont utilisées dans la NOTE de chaque groupe.
Les numéros de série des machines sont indiqués de la manière suivante.
<=15000 Numéros de série au-dessous de 15000.
>=15001 Numéros de série au-dessus de 15001.
14000 to 15000 Numéros de série 14000 à 15000.
Pour certaines modèles, les expressions ci-dessus peuvent aussi être utilisées dans la rubrique des REMARQUES 1 ⑨.

CONTENTS

[V1505-E3B-BRK-1]

0001	CRANKCASE	1
0002	OIL PAN	2
0003	CYLINDER HEAD	3
0004	GEAR CASE	4
0005	HEAD COVER	5
0006	OIL FILTER	6
0007	DIPSTICK AND GUIDE	7
0100	MAIN BEARING CASE	8
0101	CAMSHAFT AND IDLE GEAR SHAFT	9
0102	PISTON AND CRANKSHAFT	10
0103	FLYWHEEL	12
0105	FUEL CAMSHAFT AND GOVERNOR SHAFT	13
0180	IDLE APPARATUS	14
0201	STOP SOLENOID	15
0202	INJECTION PUMP	16
0205	SPEED CONTROL PLATE	17
0206	NOZZLE HOLDER AND GLOW PLUG	18
0207	NOZZLE HOLDER (COMPONENT PARTS)	19
0212	FORK LEVER (GOVERNOR)	20
0300	FUEL FILTER	21
0301	FUEL PUMP (MECHANICAL)	22
0402	ALTERNATOR AND PULLEY	23
0403	ALTERNATOR (COMPONENT PARTS)	24
0404	STARTER	25
0405	STARTER (COMPONENT PARTS)	26
0406	OIL SWITCH/THERMOMETER AND PLUG	27
0500	WATER FLANGE AND THERMOSTAT	28
0501	WATER PUMP	29
0503	WATER PIPE	30
0504	FAN	31
0505	RESERVE TANK	32
0600	VALVE AND ROCKER ARM	33
0601	INLET MANIFOLD	34
0602	EXHAUST MANIFOLD	35
0605	MUFFLER	36
0809	LABEL AND OPERATOR' S MANUAL	37
■	NUMERICAL INDEX	38

CONTENIDO

[V1505-E3B-BRK-1]

0001	BLOQUE MOTOR	1
0002	ENGRASE LA CACEROLA	2
0003	CILINDRO CULATA	3
0004	ENGRANAJE CAJA	4
0005	CULATA CUBIERTA	5
0006	ACEITE FILTRO	6
0007	VARILLA DE NIVBL Y GUIA	7
0100	PRINCIPAL RODAMIENTO CAJA	8
0101	ARBOL DE LEVAS Y PUNTO MUERTO ENGRANAJEEJE	9
0102	PISTON Y CIGUENAL	10
0103	VOLANTE	12
0105	COMBUSTIBLE ARBOL DE LEVAS Y REGULADOR EJE	13
0180	PUNTO MUERTO APARATO	14
0201	PARAR SOLENOIDE	15
0202	INYECCION BOMBA	16
0205	VELOCIDAD CONTROL PLACA	17
0206	TOBERA SOPORTE Y BUJIA DE CALENTAMIENTOTAPON	18
0207	TOBERA SOPORTE (COMPONENTE PIEZAS)	19
0212	BIFURCACION PALANCA (REGULADOR)	20
0300	COMBUSTIBLE FILTRO	21
0301	COMBUSTIBLE BOMBA (MECANICO)	22
0402	ALTERNADOR Y POLEA	23
0403	ALTERNADOR (COMPONENTE PIEZAS)	24
0404	MOTOR DE ARRANQUE	25
0405	MOTOR DE ARRANQUE (COMPONENTE PIEZAS)	26
0406	ACEITE CONMUTADOR/TERMOMETRO Y TAPON	27
0500	AGUA BRIDA Y TERMOSTATO	28
0501	AGUA BOMBA	29
0503	AGUA TUBO	30
0504	VENTILADOR	31
0505	RESERVA DEPOSITO	32
0600	VALVULA Y BALANCIN BRAZO	33
0601	ENTRADA COLECTOR	34
0602	ESCAPE COLECTOR	35
0605	SILENCIADOR	36
0809	ETIQUETA Y DEL OPERADOR MANUAL	37
■	INDICE NUMERICO	38

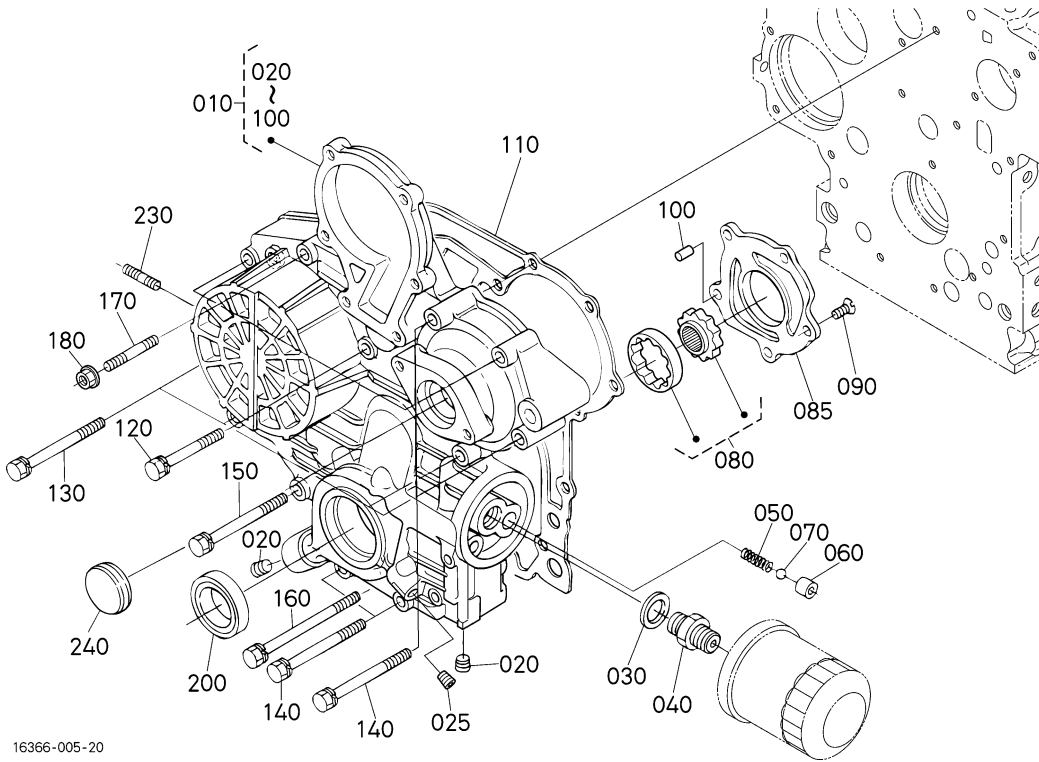
SOMMAIRE

[V1505-E3B-BRK-1]

0001	BLOC MOTEUR	1
0002	CARTER D' HUILE	2
0003	CULASSE	3
0004	CARTER DE DISTRIBUTION	4
0005	COUVRE-CULASSE	5
0006	FILTRE D' HUILE	6
0007	JAUGE D' HUILE ET GUIDE	7
0100	PALIER DE VILEBREQUIN	8
0101	ARBRE A GAMES ET ARBRE DE PIGNON DE RALENTI	9
0102	PISTON ET VILEBREQUIN	10
0103	VOLANT MOTEUR	12
0105	ARBRE A GAMES DE CARBURANT ET ARBRE REGULATEUR	13
0180	DISPOSITIF DE RALENTISSEUR	14
0201	SOLENOIDE D' ARRET	15
0202	POMPE D' INJECTION	16
0205	PLAQUE DE VITESSE-CONTROLE	17
0206	PORTE-INJECTEUR ET BOUGIE DE PRECHAUFFAGE	18
0207	PORTE-INJECTEUR (PARTIES COMPOSANTES)	19
0212	LEVIER A FOURCHE (REGULATEUR DE VITESSES)	20
0300	FILTRE A CARBURANT	21
0301	POMPE D' ALIMENTATION (MECHANIQUE)	22
0402	ALTERNATEUR	23
0403	ALTERNATEUR (PARTIES COMPOSANTES)	24
0404	DEMARREUR	25
0405	DEMARREUR (PARTIES COMPOSANTES)	26
0406	CONTACT A HUILE/THERMOMETRE ET OBTURATEUR	27
0500	BRIDE A EAU ET THERMOSTAT	28
0501	POMPE A EAU	29
0503	TUYAU D' EAU	30
0504	VENTILATEUR	31
0505	VASE D' EXPANSION	32
0600	SOUAPES ET CULBUTEURS	33
0601	COLLECTEUR D' ADMISSION	34
0602	COLLECTEUR D' ECHAPPEMENT	35
0605	SILENCIEUX	36
0809	ETIQUETTE ET MANUEL DE L' UTILISATEUR	37
■	INDEX NUMERIQUE	38

0004

GEAR CASE
ENGRANAJE CAJA
CARTER DE DISTRIBUTION

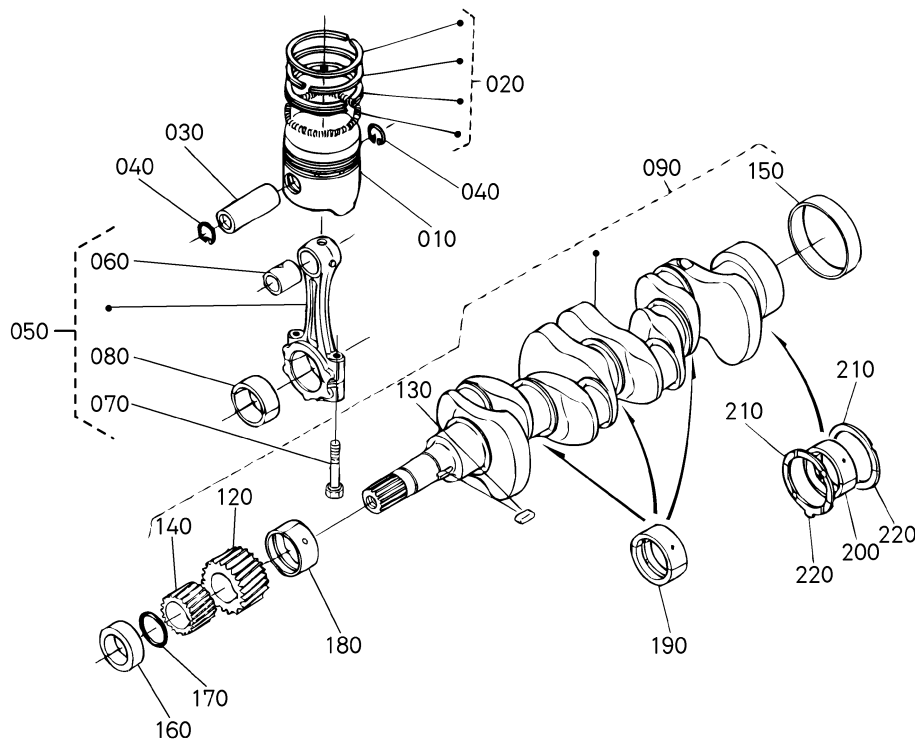


16366-005-20

A:V1505-E3B-BRK-1

REF. No. No. DE REF. POS. No.	PART No. No. REF. REFERENCE	PART NAME	DESCRIPCION	DESIGNATION	Q' TY/S. No. CANTIDAD/No. DE SERIE Q' TE/No. S.		I. C.	REMARKS NOTA REMARQUES
					A	B		
010	16252-0402-2	COMP. CASE, GEAR	COMP. CAJA, ENGRNJ	CARTER DISTR. COMP.	1	-		
020	16241-9602-0	PLUG	TAPON	BOUCHON	2	-		
025	15521-9602-0	PLUG	TAPON	BOUCHON	1	-		
030	04011-50180	WASHER, PLAIN	ARANDELA, SIMPLE	RONDELLE FREIN	1	-		
040	15241-3229-0	JOINT, PIPE	JUNTA, TUBO	RACCORD DE TUYAU	1	-		
050	16241-3695-0	SPRING	RESORTE	RESSORT	1	-		
060	16241-3693-0	SEAT, VALVE	ASIEN TO, VALVULA	SIEGE DE SOUPAPE	1	-		
070	07715-00201	BALL	BOLA	BILLE	1	-		
080	16241-3507-0	ASSY ROTOR, OIL PUMP	CONJ. ROTOR, ACT BMB	ROTOR DE POMPE HUILE	1	-		
085	16251-3513-0	COVER, OIL PUMP	CUBIERTA, ACT BMB	COUV. POMPE A HUILE	1	-		
090	03017-50620	SCREW, CR-REC-BD-HD	TORNILLO, CR-RC-BD-HD	VIS	5	-		
100	05012-00410	PIN, STRAIGHT	PASADOR, RECTO	GOUPILLE CYLINDRIQUE	2	-		
110	16264-0413-2	GASKET, GEAR CASE	JUNTA, ENGRANAJE CAJA	JOINT	1	-		
120	01023-50645	BOLT	TORNILLO	VIS	3	-		
130	01023-60650	BOLT	TORNILLO	VIS	4	-		
140	01023-50655	BOLT	TORNILLO	VIS	4	-		
150	01023-50665	BOLT	TORNILLO	VIS	1	-		
160	16241-9104-0	BOLT	TORNILLO	VIS	1	-		
170	16245-9153-0	STUD	ESPARRAGO	GOUJON	1	-		
180	02751-50060	NUT, FLANGE	TUERCA, BRIDA	ECROU A EMBASE	1	-		
190	----	BLANK	POSTIZO	BLANC	-	-		
200	16241-0421-2	SEAL, OIL	RETEN DE ACEITE	BAGUE JOINT	1	-		
210	----	BLANK	POSTIZO	BLANC	-	-		
220	----	BLANK	POSTIZO	BLANC	-	-		
230	16245-9154-0	STUD	ESPARRAGO	GOUJON	2	-		
240	16264-8334-2	COVER, GEAR CASE	CUBIERTA, ENGRNJ CJ	COUV. CARTER DISTRIB	1	-		

↔ Interchangeable; ≠ not interchangeable; ← new for old; → old for new



17208-001-28

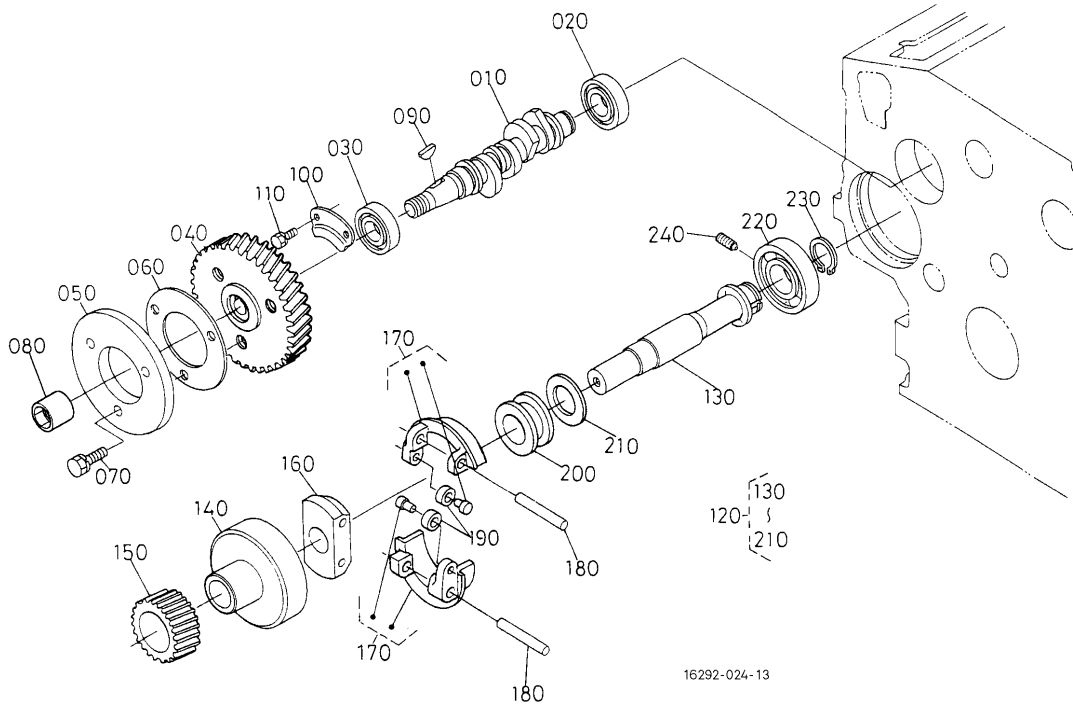
A:V1505-E3B-BRK-1

REF. No. No. DE REF. POS. No.	PART No. No. REF. REFERENCE	PART NAME	DESCRIPCION	DESIGNATION	Q' TY/S. No. CANTIDAD/No. DE SERIE Q' TE/No. S.		I. C.	REMARKS NOTA REMARQUES
					A	B		
010	16060-2111-4	PISTON	PISTON	PISTON	4	-		STD
010	16060-2191-4	PISTON	PISTON	PISTON	4	-		+0.50mm
020	16292-2105-0	ASSY PISTON RING	CONJUNTO PISTON ARO	ENS. SEGMENT	4	-		STD
020	16292-2109-0	ASSY PISTON RING	CONJUNTO PISTON ARO	ENS. SEGMENT	4	-		+0.50mm
030	16241-2131-0	PIN, PISTON	PASADOR, PISTON	AXE DE PISTON	4	-		
040	16241-2133-0	CIR CLIP, PISTON PIN	ANILLO	CIRCLIP	8	-		
050	1G700-2201-0	ASSY ROD, CONNECTING	CONJ. VARILLA, CNCTND	ENS. BIELLE	4	-		
060	1G700-2198-0	BUSH, PISTON PIN	CASQUILLO, PSTN PSDR	BAGUE DE BIELLE	4	-		
070	16241-2214-2	BOLT, CONNECTING ROD	TORNILLO, CNCTND VRL	VIS DE BIELLE	8	-		
080	16241-2231-0	METAL, CRANKPIN	METAL, MUNEQUILLA	COUSSINET DE BIELLE	4	-		STD SET
080	16241-2297-0	METAL, CRANKPIN	METAL, MUNEQUILLA	COUSSINET DE BIELLE	4	-		-0.20mm SET
080	16241-2298-0	METAL, CRANKPIN	METAL, MUNEQUILLA	COUSSINET DE BIELLE	4	-		-0.40mm SET
090	16282-2301-3	COMP. CRANKSHAFT	COMPLETO CIGUENAL	VILEBREQUIN COMPLET	1	-		
100	----	BLANK	POSTIZO	BLANC	-	-		
110	----	BLANK	POSTIZO	BLANC	-	-		
120	16241-2411-0	GEAR, CRANK	ENGRANAJE, GIRAR	PIGNON	1	-		
130	16271-9523-0	KEY	LLAVE	CLAVETTE	1	-		
140	16241-3563-0	GEAR, OIL PUMP DRIVE	ENGRANAJE, ACT	PIGNON ENTRAIN. POMPE	1	-		
150	16241-2328-0	SLEEVE, CRANKSHAFT	CASQUILLO, CIGUENAL	FRETTE ARRIERE	1	-		
160	16241-2325-0	COLLAR, CRANKSHAFT	COLLARIN, CIGUENAL	COLLIER VILEBREQUIN	1	-		
170	04814-10280	RING	ARO	BAGUE	1	-		
180	16241-2347-0	METAL, CRANKSHAFT	METAL, CIGUENAL	COUSSINET DE VILEBR.	1	-		STD
180	16241-2391-0	METAL, CRANKSHAFT	METAL, CIGUENAL	COUSSINET DE VILEBR.	1	-		-0.20mm
180	16241-2392-0	METAL, CRANKSHAFT	METAL, CIGUENAL	COUSSINET DE VILEBR.	1	-		-0.40mm
190	16241-2348-0	METAL, CRANKSHAFT	METAL, CIGUENAL	COUSSINET DE VILEBR.	3	-		STD SET
190	16241-2393-0	METAL, CRANKSHAFT	METAL, CIGUENAL	COUSSINET DE VILEBR.	3	-		-0.20mm SET
190	16241-2394-0	METAL, CRANKSHAFT	METAL, CIGUENAL	COUSSINET DE VILEBR.	3	-		-0.40mm SET
200	16292-2349-4	METAL, CRANKSHAFT	METAL, CIGUENAL	COUSSINET DE VILEBR.	1	-		STD SET
200	16292-2386-4	METAL, CRANKSHAFT	METAL, CIGUENAL	COUSSINET DE VILEBR.	1	-		-0.20mm SET
200	16292-2387-4	METAL, CRANKSHAFT	METAL, CIGUENAL	COUSSINET DE VILEBR.	1	-		-0.40mm SET

↔ Interchangeable; ≠ not interchangeable; ← new for old; → old for new

0105

FUEL CAMSHAFT AND GOVERNOR SHAFT
 COMBUSTIBLE ARBOL DE LEVAS Y REGULADOR EJE
 ARBRE A CAMES DE CARBURANT ET ARBRE REGULATEUR

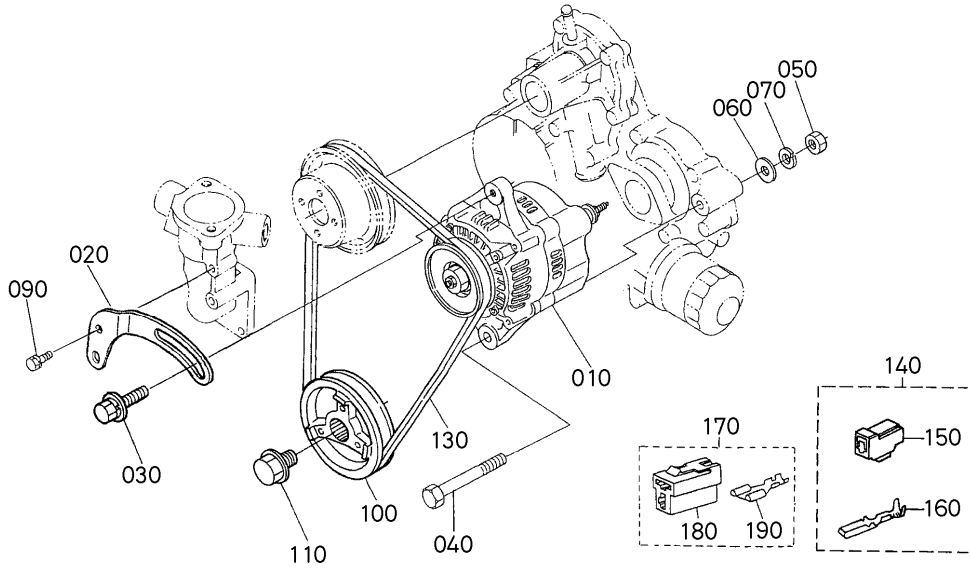


16292-024-13

A:V1505-E3B-BRK-1

REF. No. No. DE REF. POS. No.	PART No. No. REF. REFERENCE	PART NAME	DESCRIPCION	DESIGNATION	Q' TY/S. No. CANTIDAD/No. DE SERIE Q' TE/No. S.		I. C.	REMARKS NOTA REMARQUES
					A	B		
010	16040-1617-0	CAMSHAFT, FUEL	ARBOL LEVAS, CMBSTBL	ARBRE A CAMES	1	-		
020	16261-9730-0	BEARING, BALL	RODAMIENTO	ROULEMENT A BILLES	1	-		
030	16261-9731-0	BEARING, BALL	RODAMIENTO	ROULEMENT A BILLES	1	-		
040	1G065-5115-0	GEAR, INJECTION PUMP	ENGRANAJE, INYCCN BMB	ENGRE. POMPE D' INJEC.	1	-		
050	16241-5111-3	CAM, FUEL	LEVA, COMBUSTIBLE	CAME DE CARBURANT	1	-		
060	16241-5119-0	WASHER	ARANDELA	RONDELLE	1	-		
070	01023-50618	BOLT	TORNILLO	VIS	3	-		
080	16241-9233-0	NUT	TUERCA	ECROU	1	-		
090	16241-9523-0	KEY, WOODRUFF	LLAVE, ASPERILLA	CLAVETTE WOODRUFF	1	-		
100	16241-1632-0	STOPPER, FUEL. C/SHAFT	TAPON, CMBSTBL LV/EJ	BOUCHON	1	-		
110	01023-50616	BOLT	TORNILLO	VIS	2	-		
120	16282-5501-3	ASSY SHAFT, GOVERNOR	CONJ. EJE, RGLDR	ENS. ARBRE REGULATE.	1	-		
130	16271-5531-3	SHAFT, GOVERNOR	EJE, REGULADOR	ARBRE DE REGULATEUR	1	-		
140	16241-5539-2	HOLDER, GOVERNOR GEAR	SOPORTE, RGLDR ENGRNJ	SUPPORT REGUL-PIGNON	1	-		
150	16282-5532-0	GEAR, GOVERNOR	ENGRANAJE, REGULADOR	ENGRENAGE DE REGULAT	1	-		
160	16241-5527-0	HOLDER, GOV. WEIGHT	SOPORTE, RGLDR PS	SUPPORT POIDS REGUL.	1	-		
170	16241-5506-2	COMP. WEIGHT, GOVERNOR	COMP. PESO, RGLDR	POIDS COMP. REGUL.	2	-		
180	16241-5526-0	SHAFT, GOV. WEIGHT	EJE, REGULADOR PESO	ARBRE DE POIDS REG.	2	-		
190	19484-5544-0	ROLLER	RODILLO	ROULEAU	2	-		
200	16241-5545-0	SLEEVE, GOVERNOR	CASQUILLO, REGULADOR	BAGUE DE REGULATEUR	1	-		
210	16241-5546-3	WASHER, THRUST	ARANDELA, EMPUJE	RONDELLE DE BUTEE	1	-		
220	16261-9732-0	BEARING, BALL	RODAMIENTO	ROULEMENT A BILLES	1	-		
230	16271-5541-0	CIR CLIP, GOV. SHAFT	ANILLO	CIRCLIP DE REG. ARBRE	1	-		
240	16241-5555-4	SCREW, SET	TORNILLO, JUEGO	VIS D' ARRET	1	-		

↔ Interchangeable; ≠ not interchangeable; ← new for old; → old for new



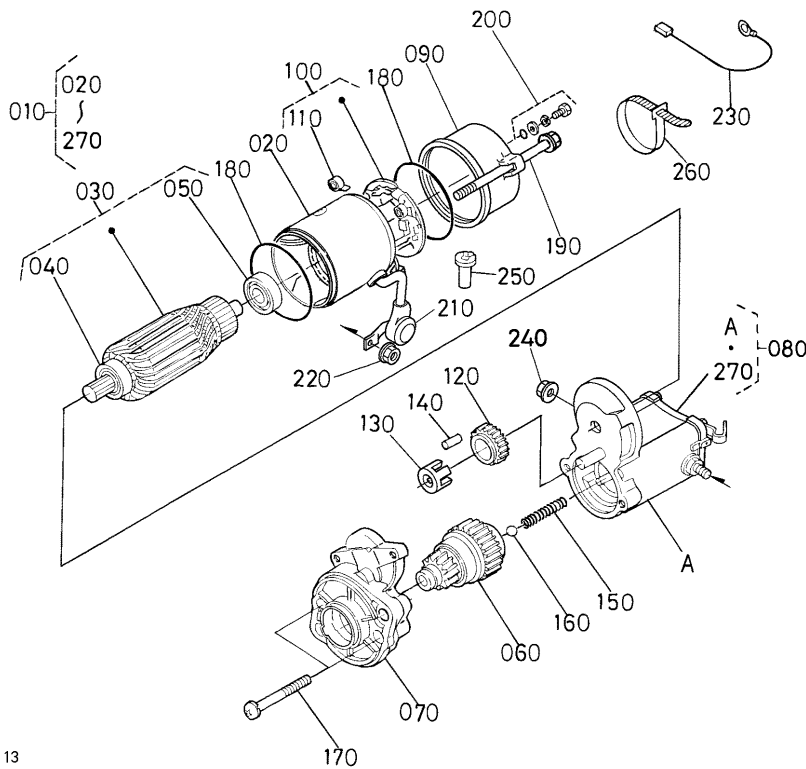
16292-006-22

A:V1505-E3B-BRK-1

REF. No. No. DE REF. POS. No.	PART No. No. REF. REFERENCE	PART NAME	DESCRIPCION	DESIGNATION	Q' TY/S. No. CANTIDAD/No. DE SERIE Q' TE/No. S.		I. C.	REMARKS NOTA REMARQUES
					A	B		
010	16241-6401-2	ASSY ALTERNATOR	CONJUNTO ALTERNADOR	ALTERNATEUR COMPLET	1	-		12V 40A
020	16241-6442-2	STAY, DYNAMO	SOPORTE, DINAMO	TENDEUR	1	-		
030	01127-50830	BOLT	TORNILLO	VIS	1	-		
040	01173-51085	BOLT	TORNILLO	VIS	1	-		
050	02176-50100	NUT	TUERCA	ECROU	1	-		
060	04011-50100	WASHER, PLAIN	ARANDELA, SIMPLE	RONDELLE FREIN	1	-		
070	04512-60100	WASHER, SPRING	ARANDELA DE MUELLE	RONDELLE GROWER	1	-		M10
080	----	BLANK	POSTIZO	BLANC	-	-		
090	01023-50616	BOLT	TORNILLO	VIS	1	-		
100	16249-7428-0	PULLEY, FAN DRIVE	POLEA, VNTLDR ACCNR	POULIE ENTRAIN. VENT.	1	-		
110	16241-9102-0	BOLT, FAN DRIVE	TORNILLO, VNTLDR	VIS	1	-		
120	----	BLANK	POSTIZO	BLANC	-	-		
130	16282-9701-0	V BELT	V CORREA	COURROIE	1	-		37.51N
140	1C010-6583-0	ASSY COUPLER	CONJUNTO ACOPLADOR	ENS. COUPLEUR	1	-		
150	1C010-6588-0	CONNECTOR	CONNETTORE	CONNECTEUR	1	-		
160	1C010-6591-0	TERMINAL	TERMINAL	DEBORNE	2	-		
170	19838-6583-0	ASSY COUPLER	CONJUNTO ACOPLADOR	ENS. COUPLEUR	1	-		
180	19872-6588-0	CONNECTOR	CONNETTORE	CONNECTEUR	1	-		
190	19237-6591-0	TERMINAL	TERMINAL	DEBORNE	2	-		

0405

STARTER (COMPONENT PARTS)
MOTOR DE ARRANQUE (COMPONENTE PIEZAS)
DEMARREUR (PARTIES COMPOSANTES)

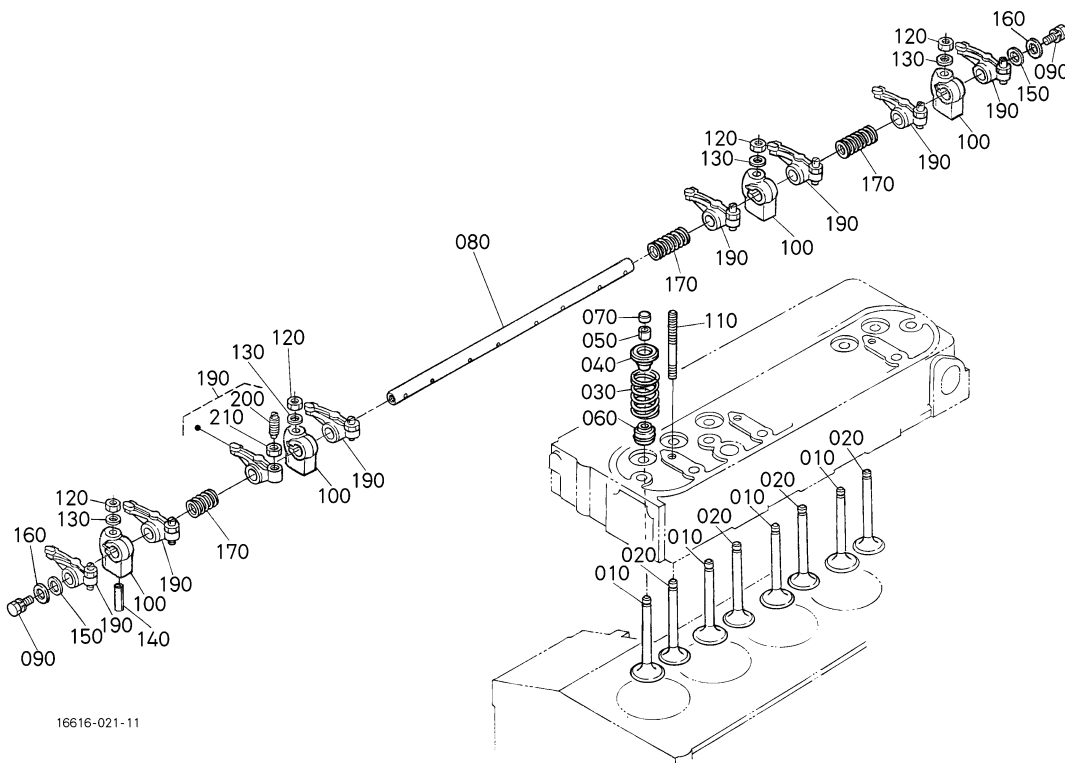


1G662-012-13

A: V1505-E3B-BRK-1

REF. No. No. DE REF. POS. No.	PART No. No. REF. REFERENCE	PART NAME	DESCRIPCION	DESIGNATION	Q' TY/S. No. CANTIDAD/No. DE SERIE Q' TE/No. S.		I. C.	REMARKS NOTA REMARQUES
					A	B		
010	16235-6301-0	ASSY STARTER	CONJ. MOTOR ARRANQUE	ENS. DEMARREUR	1	-		12V 1.4KW
020	16661-6308-0	ASSY YOKE	CONJUNTO YUGO	ENS. CHAPE	1	-		
030	11197-6307-0	ASSY ARMATURE	CONJUNTO INDUCIDO	ENS. ARMATURE	1	-		
040	11460-6350-0	BEARING	RODAMIENTO	ROULEMENT	1	-		
050	11460-6353-0	BEARING	RODAMIENTO	ROULEMENT	1	-		
060	16235-6304-0	KIT, STARTER	KIT, MTR D ARRNQ	BORNE ET PLONGEUR	1	-		
070	16235-6303-0	ASSY HOUSING, STARTER	CONJ. CARCASA	ENS. CARTER DEMARREUR	1	-		
080	16611-6302-0	ASSY SWITCH, MAGNETIC	CONJ. CONMUTADOR	ENS. INTERRUPTEUR	1	-		
090	17341-6320-0	FRAME, END	BASTIDOR, FIN	BATI	1	-		
100	11197-6338-0	ASSY HOLDER, BRUSH	SOPORTE, ASAMBLEA	ENS. SUPPORT	1	-		
110	15401-6339-0	SPRING, BRUSH	RESORTE, ESCOBILLA	RESSORT DE BALAI	4	-		
120	11460-6327-0	GEAR	ENGRANAJE	ENGRENAGE	1	-		
130	11460-6311-0	RETAINER	DETENEDOR	SUPPORT	1	-		
140	19212-6310-0	ROLLER	RODILLO	ROULEAU	5	-		
150	11460-6312-0	SPRING	RESORTE	RESSORT	1	-		
160	19212-9713-0	BALL	BOLA	BILLE	1	-		
170	11460-9331-0	BOLT	TORNILLO	VIS	2	-		
180	15511-9666-0	O RING	O ARO	JOINT TORIQUE	2	-		
190	11197-6332-0	BOLT	TORNILLO	VIS	2	-		
200	15511-6376-0	ASSY BOLT	CONJUNTO TORNILLO	ENS. VIS	2	-		
210	16611-6345-0	COVER	CUBIERTA	COUVERCLE	1	-		
220	13963-9201-0	NUT, HEXAGON	TUERCA, HEXAGONO	ECROU HEXAGONAL	1	-		
230	16611-6366-0	CORD, STOP SOLENOID	CABLE, PRR SLND	PRISE DE SOLENOIDE	1	-		
240	16285-9201-0	NUT, HEXAGON	TUERCA, HEXAGONO	ECROU HEXAGONAL	1	-		
250	16285-6357-0	PIPE, DRAIN	TUBO, VACIAR	TUYAU DE DRAINAGE	1	-		
260	16612-6310-0	BAND, COVER	BANDA, CUBIERTA	BANDE, COUVERCLE	1	-		
270	16285-9805-0	ASSY COVER	COJ. CUBIERTA	ENS. COUVERCLE	1	-		

↔ Interchangeable; ≠ not interchangeable; ← new for old; → old for new



16616-021-11

A:V1505-E3B-BRK-1

REF. No. No. DE REF. POS. No.	PART No. No. REF. REFERENCE	PART NAME	DESCRIPCION	DESIGNATION	Q' TY/S. No. CANTIDAD/No. DE SERIE Q' TE/No. S.		I. C.	REMARKS NOTA REMARQUES
					A	B		
010	16241-1311-5	VALVE, INLET	VALVULA, ENTRADA	SOUPAPE D' ADMISSION	4	-		
020	16241-1312-6	VALVE, EXHAUST	VALVULA, ESCAPE	SOUPAPE D' ECHAPMENT	4	-		
030	16271-1324-0	SPRING, VALVE	RESORTE, VALVULA	RESSORT DE SOUPAPE	8	-		
040	16261-1333-0	RETAINER, SPRING	RETENEDOR, RESORTE	ARRETOIR DE RESSORT	8	-		
050	15261-1336-0	COLLET, VALVE SPRING	ENGASTE, VLVL RSRT	DEMI CLAVETTE	8	-		SET
060	1C010-1315-0	SEAL, VALVE STEM	RETEN, VLVL VSTG	JOINT DE SOUPAPE	8	-		
070	16241-1328-0	CAP, VALVE	TAPA, VALVULA	CHAPEAU DE SOUPAPE	8	-		
080	16241-1426-4	SHAFT, ROCKER ARM	EJE, BALANCIN BRAZO	ARBRE DE CULBUTEUR	1	-		
090	01023-50610	BOLT	TORNILLO	VIS	2	-		
100	16241-1435-0	BRACKET, ROCKER ARM	SOPORTE, BLNCN BRZ	SUPPORT DE CULBUTEUR	4	-		
110	16241-1441-0	STUD	ESPARRAGO	GOUJON	4	-		
120	15261-9201-0	NUT	TUERCA	ECROU	4	-		
130	15261-9401-0	WASHER, PLAIN	ARANDELA, SIMPLE	RONDELLE FREIN	4	-		
140	05411-00428	PIN, SPRING	PASADOR, RESORTE	GOUPILLE-RESSORT	1	-		
150	16241-1443-0	WASHER, R-ARM. SHAFT	ARANDELA, BLNCN-BRZ	RONDELLE	2	-		
160	15841-9402-2	WASHER, PLAIN	ARANDELA, SIMPLE	RONDELLE FREIN	2	-		
170	16241-1431-0	SPRING, ROCKER ARM	RESORTE	RESSORT DE CULBUTEUR	3	-		
180	---	BLANK	POSTIZO	BLANC	-	-		
190	16241-1403-2	ASSY ROCKER ARM	CONJ. BALANCIN BRZ	ENS. CULBUTEURS	8	-		
200	16241-1423-0	SCREW, ADJUSTING	TORNILLO, AJUSTE	VIS DE REGLAGE	8	-		
210	16241-1424-0	NUT	TUERCA	ECROU	8	-		

↔ Interchangeable; ≠ not interchangeable; ← new for old; → old for new

**NUMERICAL INDEX
INDICE NUMERICO
INDEX NUMERIQUE**

PART No. No. REF. REFERENCE	PAGE PAGINA PAGE	REF. No. No. DE REF. POS. No.	PART No. No. REF. REFERENCE	PAGE PAGINA PAGE	REF. No. No. DE REF. POS. No.	PART No. No. REF. REFERENCE	PAGE PAGINA PAGE	REF. No. No. DE REF. POS. No.	PART No. No. REF. REFERENCE	PAGE PAGINA PAGE	REF. No. No. DE REF. POS. No.
E9151-3314-0.....5...100			05411-00428.....33...140			15841-4252-0.....18...045			16040-5216-0.....16...060		
HH160-3209-3.....6...010			05712-00518.....9...070			15841-5135-0.....16...130			16040-5220-0.....16...050		
01023-50610.....33...090			07715-00201.....4...070			15841-5136-0.....18...020			16060-2111-4.....10...010		
01023-50612.....20...100			07715-03205.....20...045			15841-5362-2.....18...070			16060-2191-4.....10...010		
01023-50614.....2...030			09318-88150.....5...130			19...120			16060-5101-0.....16...040		
01023-50616.....9...090			11197-6307-0.....26...030			15841-5385-0.....18...120			16217-5601-4.....20...030		
	9...160		11197-6332-0.....26...190			15841-5386-0.....18...130			16219-7326-0.....28...100		
	13...110		11197-6338-0.....26...100			15841-7302-0.....1...220			16221-5442-0.....14...060		
	17...140		11460-6311-0.....26...130			15841-9150-0.....16...080			16221-5628-0.....1...160		
	23...090		11460-6312-0.....26...150			15841-9202-0.....14...030			16221-7327-0.....28...110		
01023-50616.....28...050			11460-6327-0.....26...120			15841-9232-0.....16...090			16222-5751-0.....17...110		
01023-50618.....13...070			11460-6350-0.....26...040			15841-9402-2.....33...160			16226-3211-4.....2...080		
	34...040		11460-6353-0.....26...050			15841-9602-0.....27...020			16231-6406-0.....24...140		
01023-50620.....8...080			11460-9331-0.....26...170			15841-9665-0.....16...120			16231-6423-0.....24...150		
01023-50625.....8...070			13901-3375-0.....2...040			15841-9666-0.....16...140			16231-6485-0.....24...160		
01023-50630.....29...080			13963-9201-0.....26...220			15852-7334-0.....29...060			16235-6301-0.....25...010		
	34...050		14182-9203-0.....24...270			15852-9233-0.....14...040			26...010		
01023-50645.....4...120			14911-4275-0.....16...030			14...090			16235-6303-0.....26...070		
01023-50655.....4...140			14971-4275-0.....18...050			15876-7415-2.....31...040			16235-6304-0.....26...060		
	28...060		15021-3366-0.....1...200			15881-6409-0.....24...190			16239-7343-0.....29...070		
01023-50665.....4...150			15108-4329-0.....21...080			15881-6411-0.....24...020			16241-0175-0.....3...010		
01023-50685.....29...090			15108-4361-0.....21...040			15881-6415-0.....24...040			16241-0177-0.....3...020		
01023-60650.....4...130			15108-4378-0.....21...050			15881-6426-0.....24...120			16241-0345-0.....3...100		
	34...060		15221-0349-0.....1...030			15881-6433-0.....24...200			16241-0421-2.....4...200		
01123-50830.....21...110			15221-3361-0.....1...190			15881-6471-0.....24...100			16241-0454-0.....8...020		
	25...020		15221-4317-0.....21...060			15881-6480-0.....24...060			8...100		
01123-50835.....28...120			15231-3396-0.....1...130			15881-6481-0.....24...080			8...130		
01123-60814.....3...030			15241-3229-0.....4...040			15881-9104-0.....24...240			8...150		
	7...040		15261-0337-0.....3...090			15881-9105-0.....24...260			16241-0456-0.....8...110		
01123-60816.....2...090			15261-1336-0.....33...050			15881-9201-0.....24...030			16241-0462-0.....12...040		
01123-60816.....36...060			15261-9119-0.....12...050			15881-9202-0.....24...250			16241-0481-5.....8...040		
01127-50830.....23...030			15261-9201-0.....33...120			15881-9301-0.....24...110			16241-0555-0.....34...020		
01173-51085.....23...040			15261-9401-0.....33...130			15881-9302-0.....24...210			16241-1182-0.....34...030		
01202-50614.....15...030			15261-9601-0.....1...040			15881-9303-0.....24...220			16241-1311-5.....33...010		
01311-10620.....16...070				3...060		15881-9304-0.....24...230			16241-1312-6.....33...020		
01754-50620.....31...030			15272-7242-0.....32...020			15951-9666-0.....5...090			16241-1328-0.....33...070		
01774-61020.....36...080			15291-4301-0.....21...010			15952-9233-0.....5...080			16241-1403-2.....33...190		
02056-50060.....17...200			15291-4320-0.....21...020			16030-5132-0.....16...110			16241-1423-0.....33...200		
02176-50100.....23...050			15291-8776-0.....21...090			16032-5316-0.....19...060			16241-1424-0.....33...210		
02751-50060.....4...180			15321-9626-0.....3...050			16032-5317-0.....19...040			16241-1426-4.....33...080		
02751-50060.....17...160			15401-6339-0.....26...110			16032-5323-0.....19...030			16241-1431-0.....33...170		
	22...030		15451-9627-0.....1...020			16032-5328-0.....19...070			16241-1435-0.....33...100		
02761-50040.....18...170			15471-5798-0.....17...100			16032-5335-0.....19...050			16241-1441-0.....33...110		
03017-50620.....4...090			15501-7240-0.....32...010			16032-9203-0.....19...020			16241-1443-0.....33...150		
03024-50510.....5...060			15501-7247-0.....32...060			16032-9404-0.....19...080			16241-1452-0.....5...030		
03024-50520.....18...140			15501-7271-0.....32...040			16032-9810-0.....19...100			16241-1511-0.....9...020		
04011-50100.....23...060			15511-6376-0.....26...200			16032-9850-0.....19...110			16241-1627-0.....9...080		
04011-50180.....4...030			15511-9666-0.....26...180			16032-9851-0.....19...110			16241-1632-0.....13...100		
04512-60060.....16...100			15521-2353-0.....11...210			16032-9852-0.....19...110			16241-1651-0.....9...060		
04512-60100.....23...070			15521-2395-0.....11...210			16032-9853-0.....19...110			16241-2131-0.....10...030		
04814-00090.....7...030			15521-2396-0.....11...210			16032-9854-0.....19...110			16241-2133-0.....10...040		
04814-00100.....17...040			15521-9361-0.....9...050			16032-9855-0.....19...110			16241-2214-2.....10...070		
04814-00160.....2...100			15521-9602-0.....1...070			16032-9856-0.....19...110			16241-2231-0.....10...080		
04814-10280.....10...170				4...025		16032-9857-0.....19...110			16241-2297-0.....10...080		
04814-50300.....5...110			15527-7246-0.....32...070			16032-9858-0.....19...110			16241-2298-0.....10...080		
05012-00410.....4...100			15531-7243-2.....32...030			16032-9859-0.....19...110			16241-2325-0.....10...160		
05012-00508.....1...100			15601-9665-0.....14...050			16040-1617-0.....13...010			16241-2328-0.....10...150		
05012-00610.....1...120				14...100		16040-5209-2.....16...050			16241-2347-0.....10...180		
05012-00814.....1...110				18...030		16040-5211-2.....16...050			16241-2348-0.....8...095		
05411-00420.....17...050			15841-4250-0.....18...040			16040-5212-2.....16...060			8...125		

**NUMERICAL INDEX
INDICE NUMERICO
INDEX NUMERIQUE**

PART No. No. REF. REFERENCE	PAGE PAGINA PAGE	REF. No. No. DE REF. POS. No.	PART No. No. REF. REFERENCE	PAGE PAGINA PAGE	REF. No. No. DE REF. POS. No.	PART No. No. REF. REFERENCE	PAGE PAGINA PAGE	REF. No. No. DE REF. POS. No.	PART No. No. REF. REFERENCE	PAGE PAGINA PAGE	REF. No. No. DE REF. POS. No.
16241-2348-0.....8...145		10...190	16252-0402-2.....4...010			16285-9805-0....26...270			1G043-5641-0....20...020		
16241-2391-0....10...180			16259-0558-0.....5...140			16286-3375-0.....2...060			1G065-5115-0....13...040		
16241-2392-0....10...180			16259-1177-2.....34...010			16292-0709-5.....8...010			1G072-1450-6.....5...010		
16241-2393-0....10...190			16259-7351-2.....29...050			16292-2105-0....10...020			1G081-6382-0....12...020		
16241-2394-0....10...190			16259-7352-0.....29...020			16292-2109-0....10...020			1G263-5763-0....17...190		
16241-2411-0....10...120			16259-7355-2.....29...030			16292-2349-4.....8...015			1G511-8981-5.....37...020		
16241-2425-0....9...150			16261-0704-5.....8...090			10...200			1G513-3655-0.....7...050		
16241-2432-0....9...140			16261-0705-5.....8...120			16292-2386-4....10...200			1G642-7305-0....29...040		
16241-2436-0....9...120			16261-1333-0....33...040			16292-2387-4....10...200			1G673-1555-0....9...010		
			16261-1354-0....3...070			16299-5626-0....20...090			1G677-0304-0....3...040		
16241-2437-0....9...130			16261-1356-0....3...080			16299-5701-5....17...010			1G677-5361-2....19...090		
16241-2516-0....12...030			16261-9730-0....13...020			16299-7411-0....31...010			1G677-5390-2....18...060		
16241-3365-0.....1...140			16261-9731-0....13...030			16394-0331-0....3...120			19...010		
16241-3507-0....4...080			16261-9732-0....13...220			16611-3641-3.....7...010			1G680-7287-0....30...020		
16241-3563-0....10...140			16264-0413-2.....4...110			16611-6302-0....26...080			1G698-0101-2.....1...010		
16241-3693-0....4...060			16264-0436-0....8...030			16611-6345-0....26...210			1G700-2198-0....10...060		
16241-3695-0....4...050			16264-0482-2.....8...060			16611-6366-0....26...230			1G700-2201-0....10...050		
16241-4201-0....16...020			16264-5214-0....22...020			16612-6310-0....26...260			1G801-0512-0....5...050		
16241-5111-3....13...050			16264-5721-0....17...130			16613-7270-0....28...010			1G911-0520-3....5...040		
16241-5119-0....13...060			16264-7292-0....28...040			16614-2501-2....12...010			1G994-1211-0....36...010		
16241-5412-2....14...070			16264-8315-3....14...120			16616-0160-0....2...010			1K531-6460-2....24...280		
16241-5506-2....13...170			16264-8334-2....4...240			16622-8916-6....37...010			34150-2758-0....27...010		
16241-5526-0....13...180			16265-9667-0....2...050			16652-6431-0....24...180			36200-8272-0....30...030		
16241-5527-0....13...160			16271-0345-0....3...110			16652-6477-0....24...070			37560-1236-0....35...010		
16241-5539-2....13...140			16271-1324-0....33...030			16652-6478-0....24...130			37560-8852-2....36...050		
16241-5545-0....13...200			16271-1691-0....9...030			16661-6308-0....26...020			66436-6402-0....24...090		
16241-5546-3....13...210			16271-2401-0....9...100			16683-9602-0....1...050			66436-6404-0....24...050		
16241-5555-4....13...240			16271-2498-0....9...110			17203-7286-0....30...010			68111-4239-0....32...050		
16241-5621-0....20...110			16271-4250-2....18...010			17208-6001-5....15...010			6C090-5896-0....2...070		
16241-5625-3....20...080			16271-5371-2....18...080			17331-7334-2....5...070					
16241-5633-0....20...070			16271-5372-2....18...090			17341-6320-0....26...090					
16241-5634-0....20...120			16271-5373-2....18...100			17391-9616-0....1...080					
16241-5716-0....17...030			16271-5374-2....18...110			19071-9602-0....28...030					
16241-5763-2....17...180			16271-5531-3....13...130			19077-5365-0....18...075					
16241-6401-2....23...010			16271-5535-0....1...180			19...130					
			16271-5541-0....13...230			19202-2354-0....11...220					
16241-6442-2....23...020			16271-5602-3....17...080			19202-2397-0....11...220					
16241-6490-0....24...170			16271-5621-4....20...034			19202-2398-0....11...220					
16241-7335-0....28...070			16271-5648-0....20...010			19212-6310-0....26...140					
16241-7336-0....28...080			16271-5715-0....17...020			19212-9713-0....26...160					
16241-7337-0....28...020			16271-5772-0....17...090			19222-4328-0....21...070					
16241-7425-0....31...020			16271-5774-0....17...120			19237-6591-0....23...190					
16241-9102-0....23...110			16271-6556-0....18...160			19416-4343-3....21...100					
16241-9104-0....4...160			16271-9201-0....36...030			19426-8788-0....37...040					
16241-9202-0....17...070			16271-9523-0....10...130			19426-8790-3....37...030					
16241-9233-0....13...080			16271-9616-0....1...090			19434-7301-4....28...090					
16241-9402-0....17...060			16281-6551-0....18...150			19484-5544-0....13...190					
16241-9523-0....13...090			16282-0706-5.....8...140			20...032					
16241-9569-0....16...010			16282-2301-3....10...090			19838-6583-0....23...170					
16241-9601-0....1...060			16282-3650-0....7...020			19872-6588-0....23...180					
16241-9602-0....4...020			16282-5501-3....13...120			1C010-1315-0....33...060					
16241-9626-2....1...150			16282-5532-0....13...150			1C010-6583-0....23...140					
16245-9153-0....4...170			16282-9601-0....1...170			1C010-6588-0....23...150					
16245-9154-0....4...230			16282-9701-0....23...130			1C010-6591-0....23...160					
			16285-0446-0....8...050			1G021-9665-0....14...110					
16249-7428-0....23...100			16285-5203-2....22...010			1G031-5421-0....14...080					
16251-3513-0....4...085			16285-5409-3....14...010			1G032-0551-0....5...120					
16251-7303-4....29...010			16285-5410-3....14...020			1G032-5613-0....20...040					
16251-9151-0....35...020			16285-6357-0....26...250			1G032-5615-0....20...050					
16251-9152-0....35...030			16285-9201-0....26...240			1G032-5647-0....20...060					

PIES.No.		EDK0001161
BLOCK No.	LINE No.	A (1)
01	01	1J994-27000 V1505-E3B-BRK-1

KUBOTA

THE BASIC NECESSITIES GIANT

"Technology for the Needs of Tomorrow" is the ambition of everyone at Kubota. Through research and the development of new products for agriculture, industry, construction, and many other areas of modern life, we at Kubota hope to realize this goal.

EI GIGANTE DE LAS NECESIDADES BÁSICAS

La "tecnología para las necesidades del mañana" es la ambición de todos los que trabajamos en Kubota. A través de la investigación y el desarrollo de nuevos productos para la agricultura, industria, construcción y muchos otros ámbitos de la vida moderna, en Kubota esperamos cumplir este objetivo.

GEANT DES NECESSITES FONDAMENTALES

"La Technologie pour les Besoins de Demain" est l'ambition de chacun CHEZ KUBOTA. A travers la recherche et le développement de nouveaux produits pour l'Agriculture, l'Industrie, la Construction et plusieurs autres domaines de la vie moderne, Nous KUBOTA, espérons atteindre ce but.